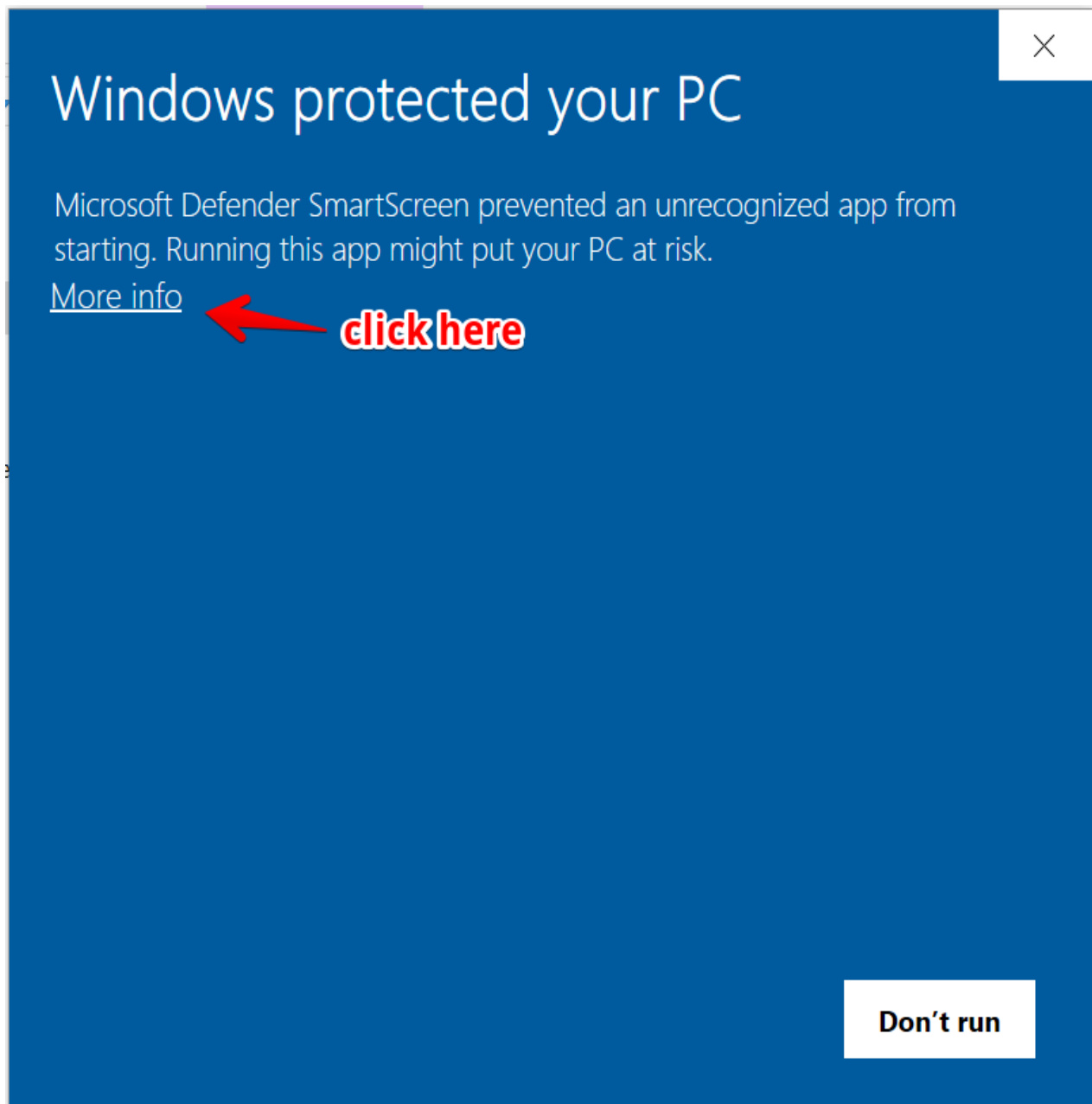


How to install and use the PACExamBrowser ?

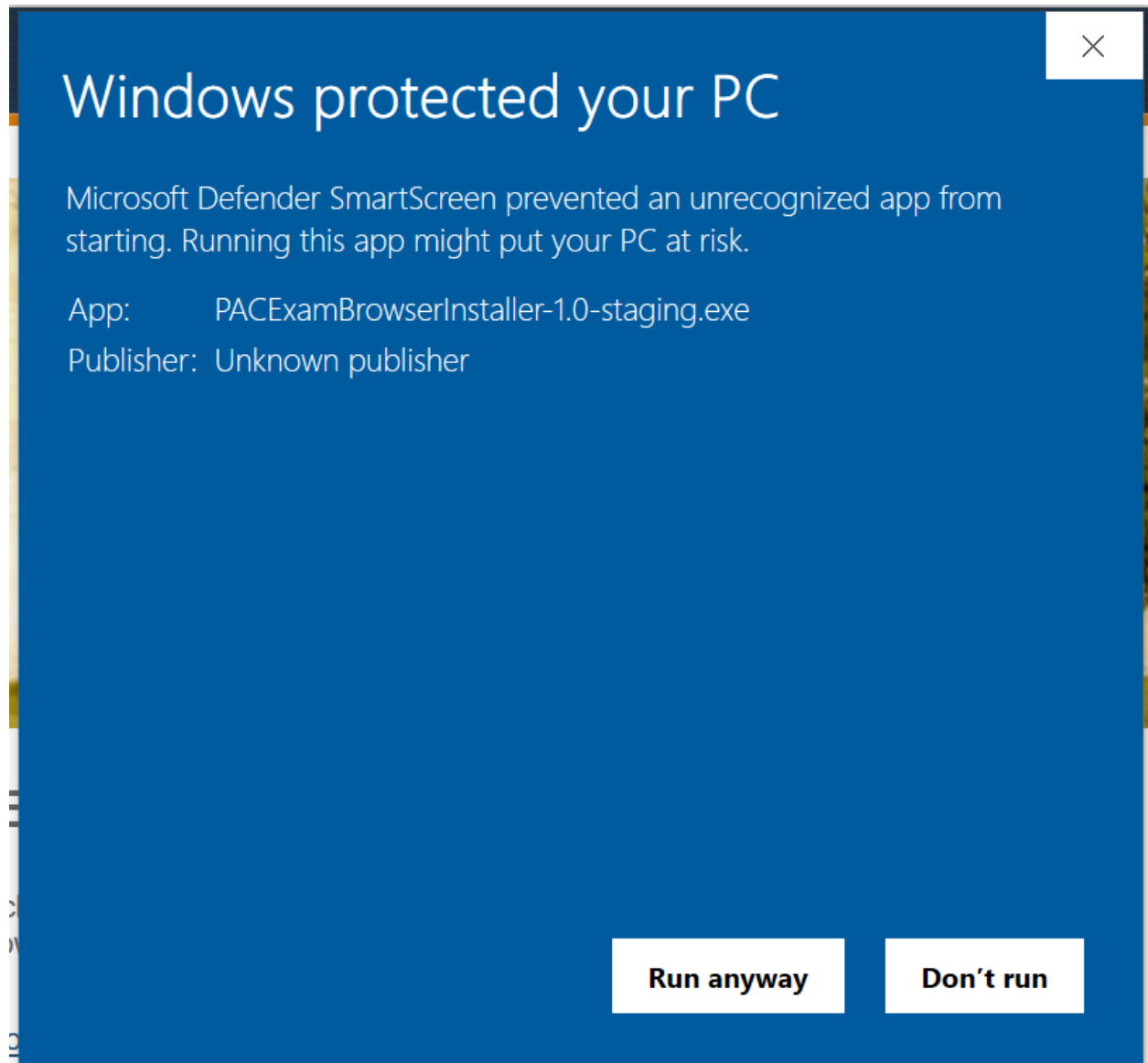
After downloading the installer for the PACExamBrowser from the given link(In Mail),

Follow the steps given below to start giving your test :-

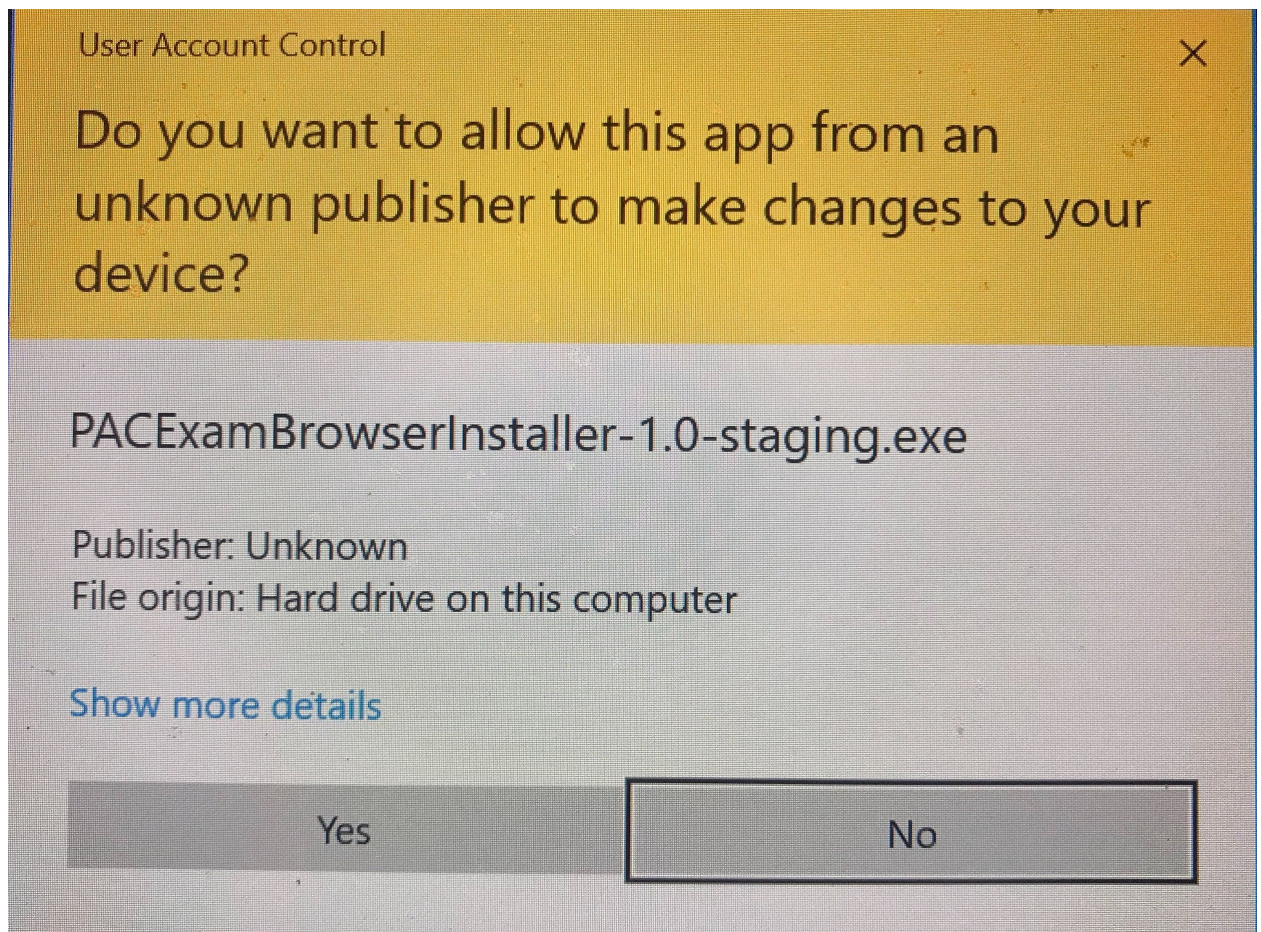
1. **Double click** on the installer to start the installation process
2. If you encounter the following message, then



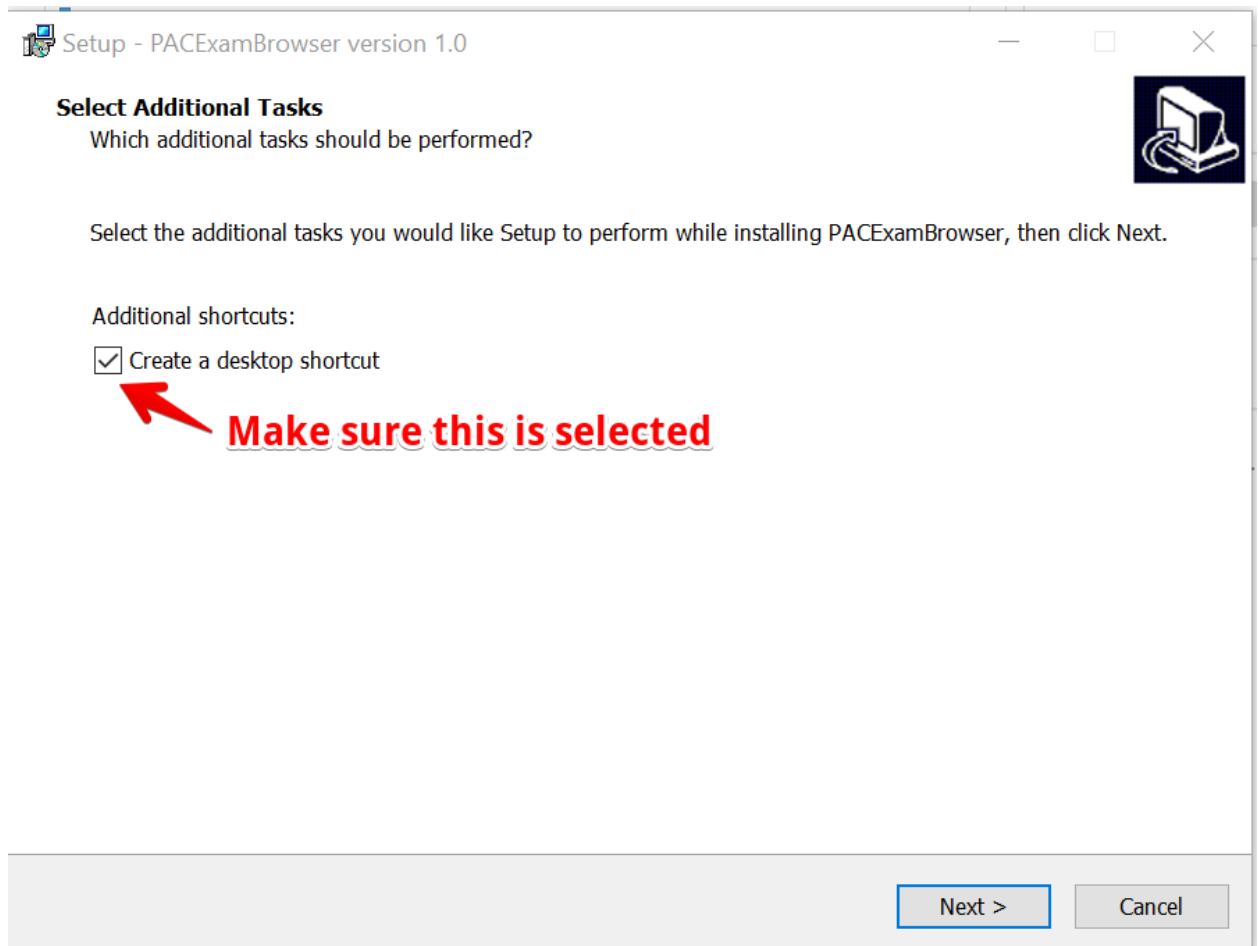
click on **“More Info”** and then click on **“Run Anyway”** to start the installation.



3. Click on **“Yes”** to let the installer run.

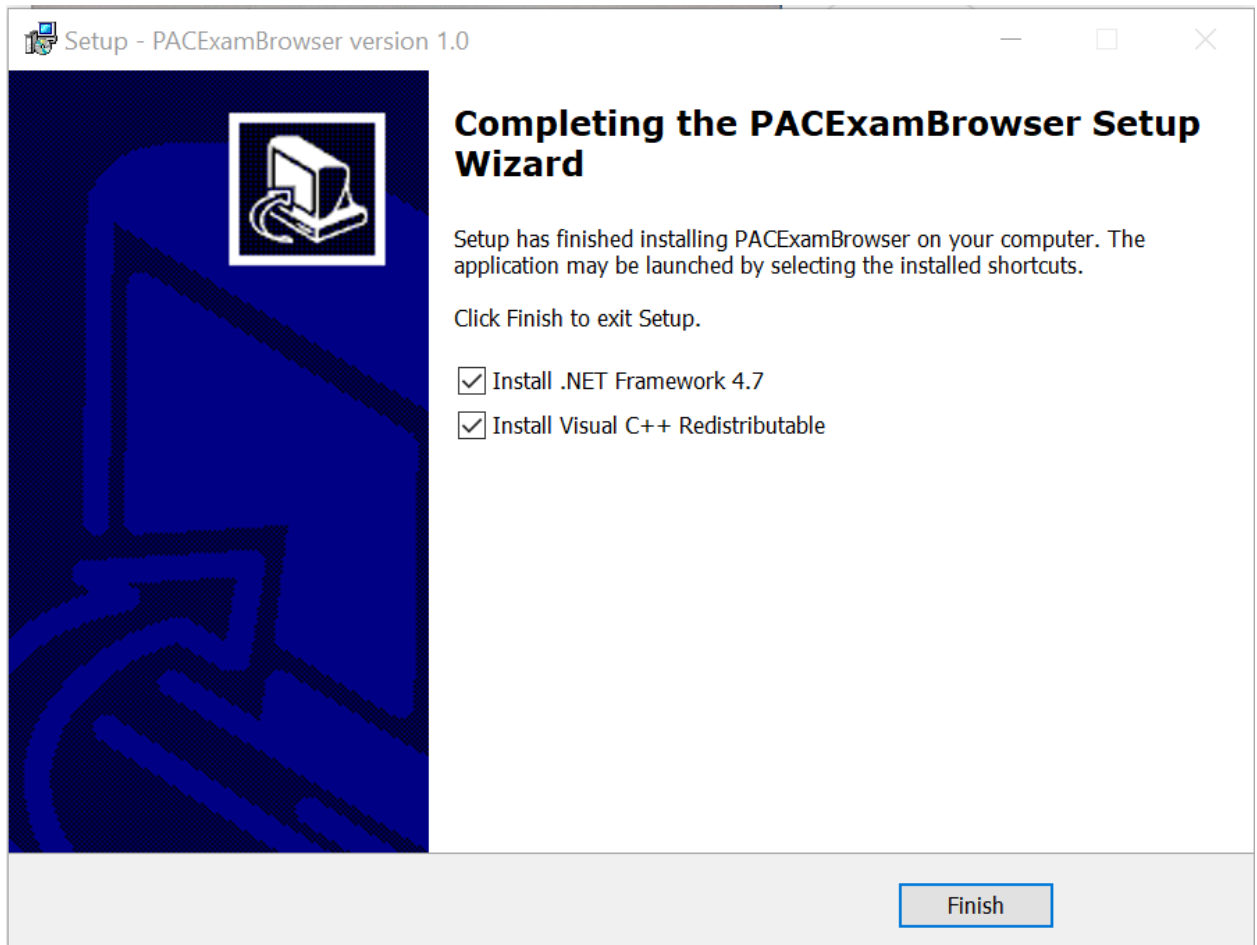


4. After the installer starts, make sure that the “**Create a Desktop Shortcut**” option is checked so that you get a nice shortcut on your desktop to easily start your test.



5. Click on **continue** and let the installer finish installing your application.

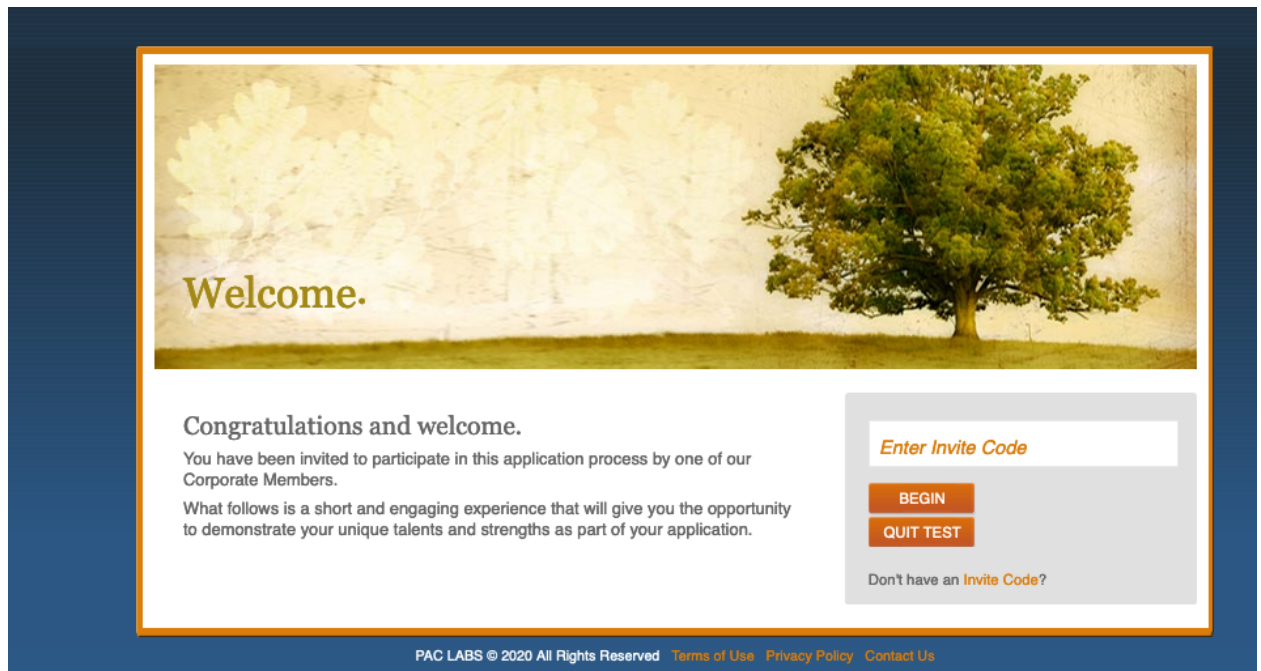
6. If you see this screen then your application has been successfully installed.



You can now start your test.

7. On this screen shown, the .NET Framework and Visual C++ are dependencies for the application. We strongly recommend that you keep this checked as they will install the dependencies if your computer does not have them or else they will quietly fail if they detect an equivalent or higher version on your computer.
8. Now start the application named "PAC Exam Browser" from your desktop shortcut or the Start Menu.
9. Once the application starts, you will not be able to come out of that environment or use any windows shortcuts until you quit the test

10. You should see this screen after the application starts.



Enter the **invite code** given to you here and follow the on screen instructions to take the test.

11. You can click on the “Quit Test” button to exit the Test.

Instructions to Take a test on PACExamBrowser

To make sure that PACExamBrowser functions properly and you can take your test securely , you have to ensure the below pointers.

- No restrictions should be implied on Network and the Application.
- Disable the Anti-Virus.
- Should have Administrative rights on the system.
- Windows needs to be up to date.
- Should not be logged in as a Guest User or as a Local User with no Administrative Rights.
- Any other program should not be running while you start the PACExamBrowser.

Operating System:

- PACExamBrowser will run on only windows (7 and above)

- Should support minimum 4.5.1. **.Net framework**. (Available in the installer also)

Memory:

- 71 MB permanent free space on the default hard drive

File Size: Medium (~71 MB)

Lock down mode:

- Once the test starts PACExamBrowser will not allow you to move out of the application before the test is finished.
- The application will close all currently running applications
 - Browsers i.e. Mozilla Firefox, Google chrome etc
 - Other (like Skype etc.)
- The PACExamBrowser doesn't have any navigation buttons, but the optional reload button.
- Wireless or Wired Screen Sharing:
 - You can only give the test on your primary monitor.
 - If PACExamBrowser detects that you are using a wired or wireless second screen, it shows you a warning and doesn't let you continue the test until you remove all additional screens.
 - The test will terminate if you click on "Ok" and we detect additional monitors still connected to the system.